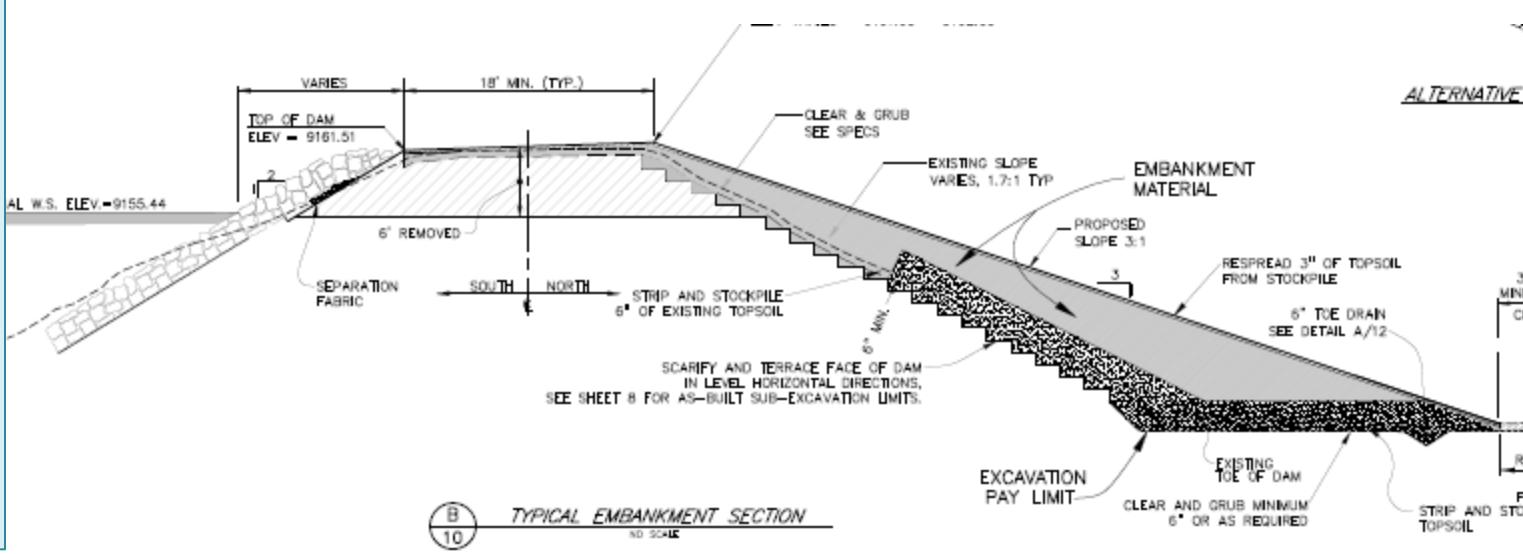
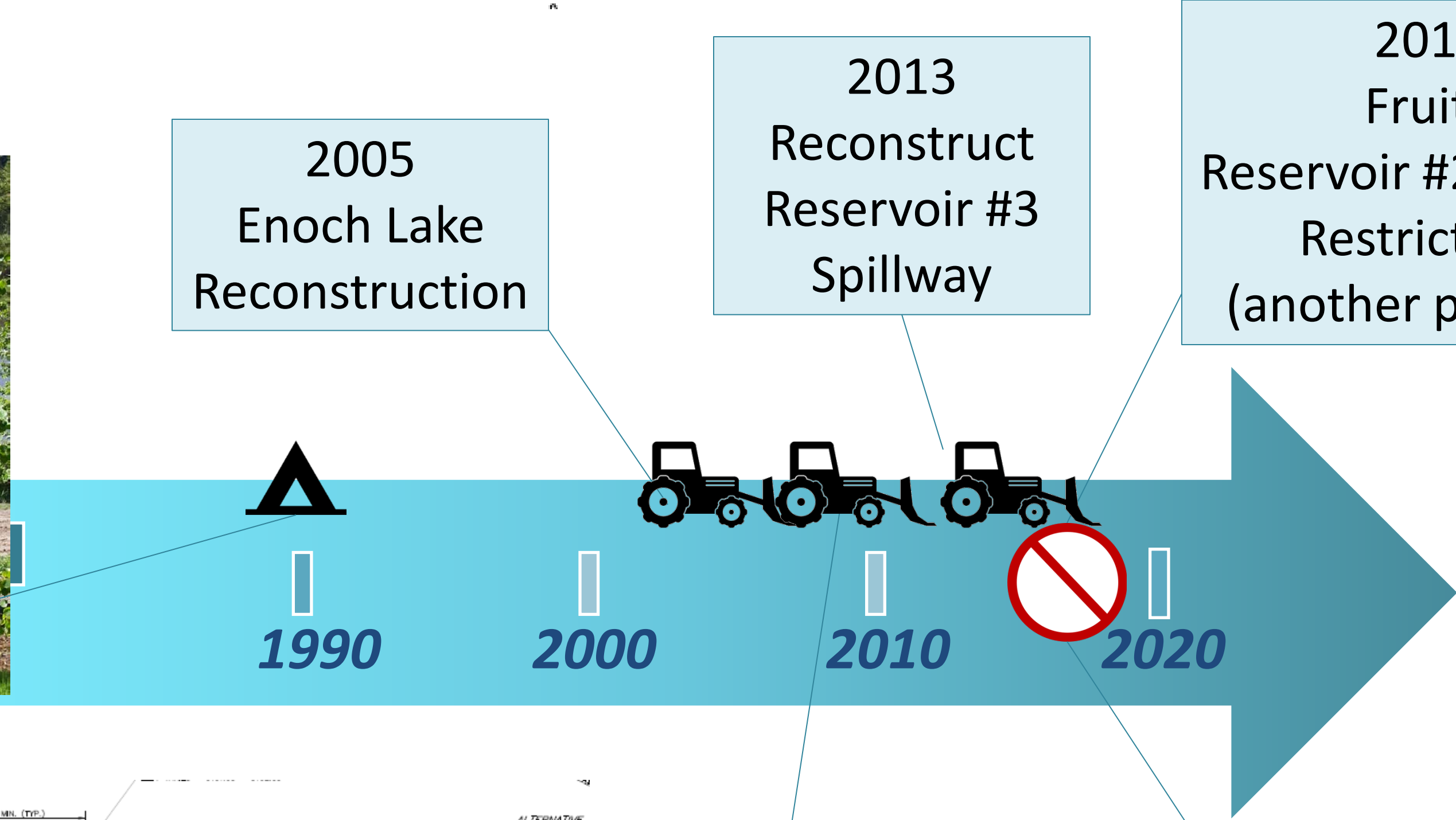
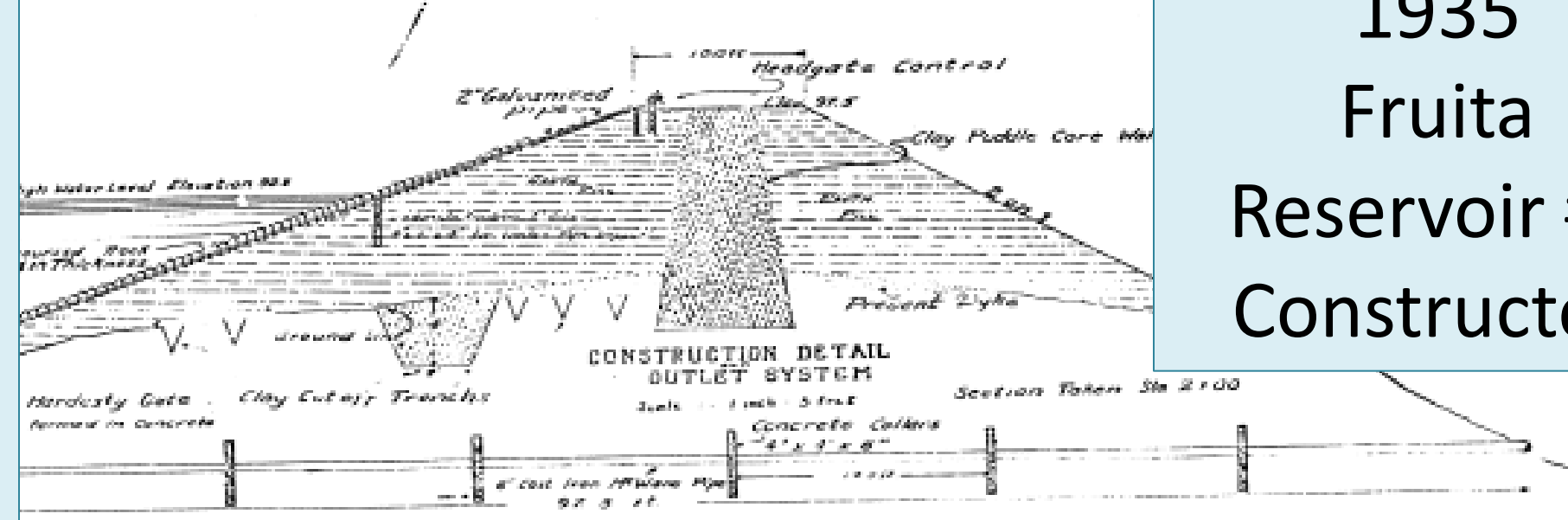
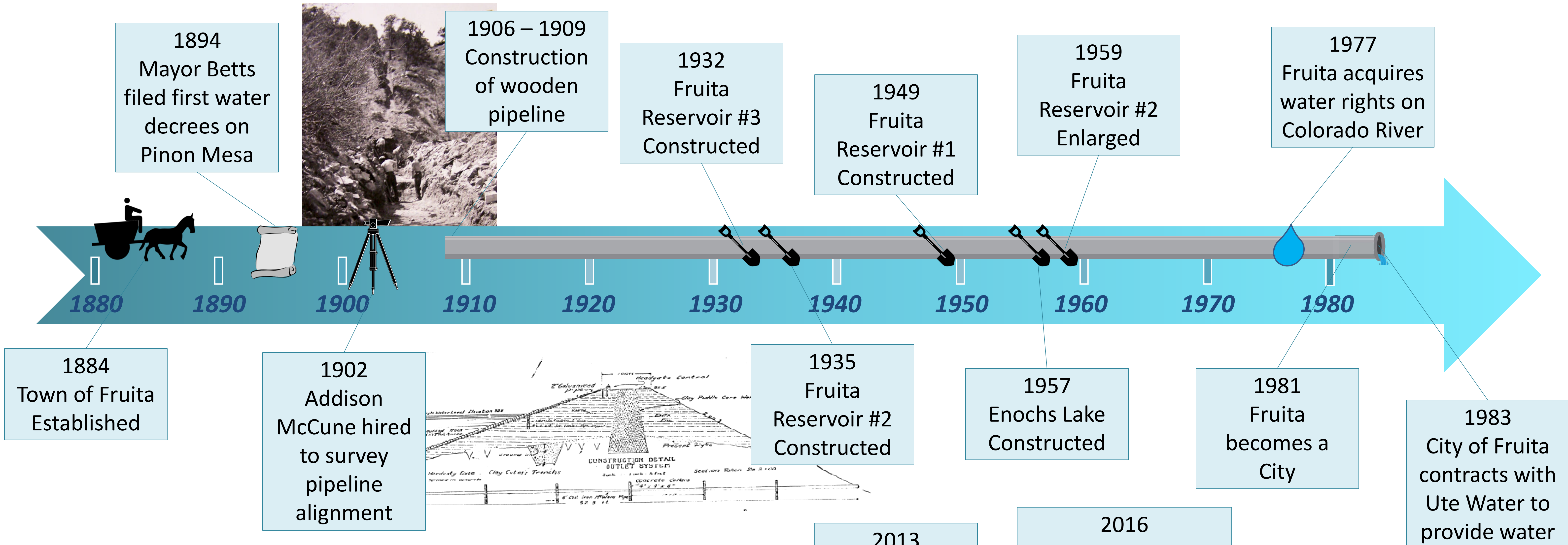
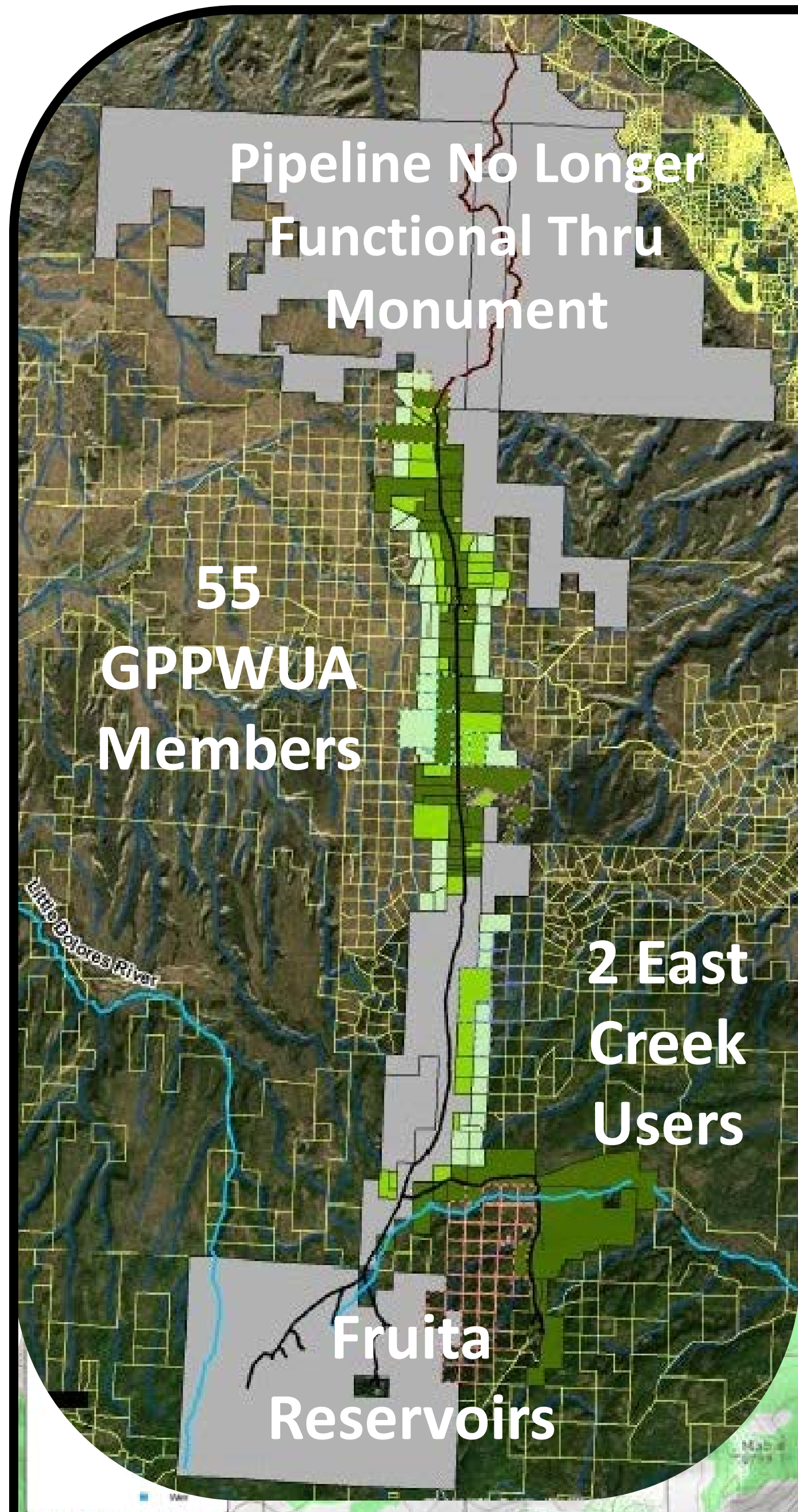


A HISTORY OF MOUNTAIN WATER



The Future of Mountain Water?

FRUITA'S WATER RESOURCES



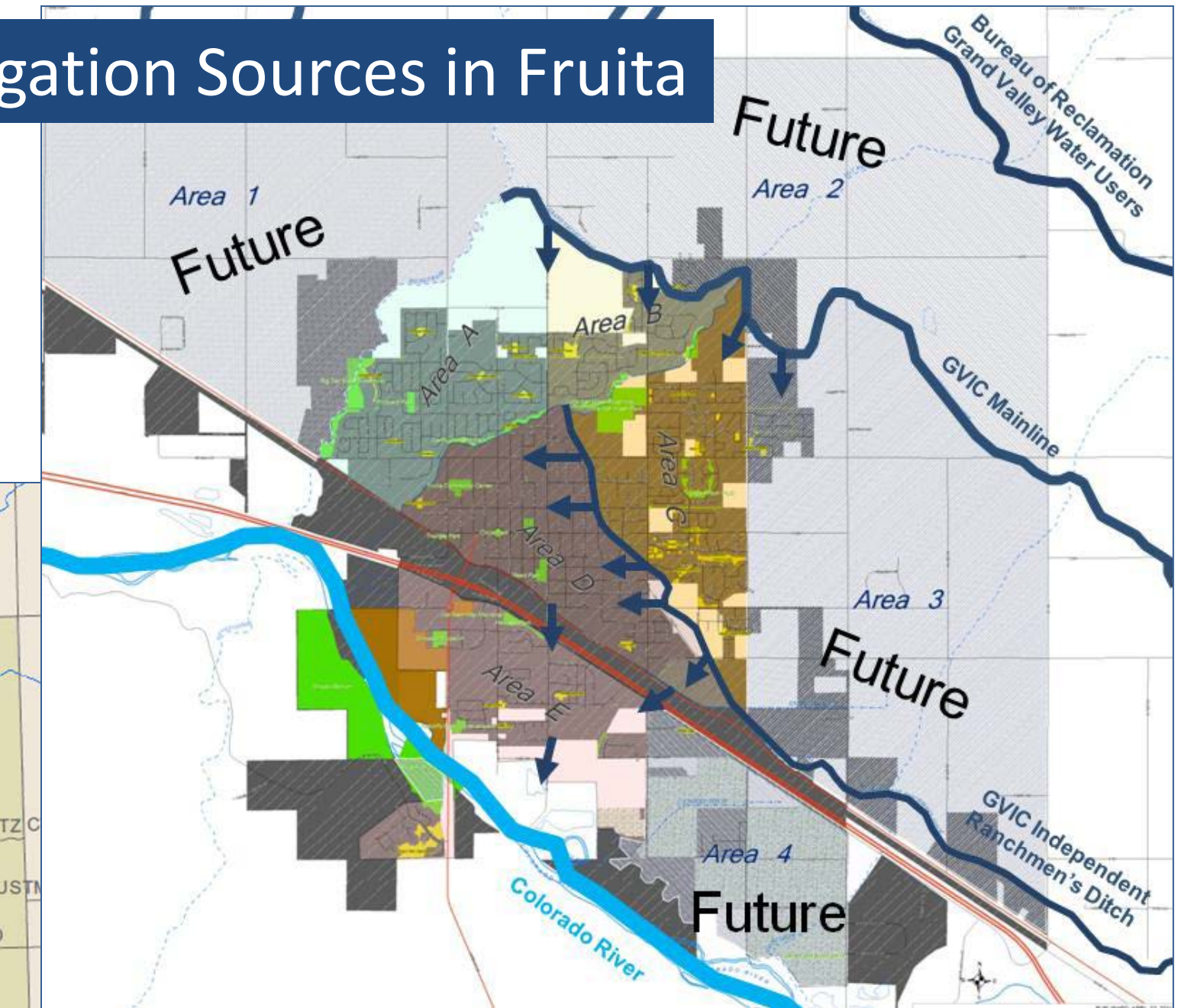
Summary of Water Rights

The following table summarizes the amount of water owned or utilized by the City of Fruita for non-domestic purposes.

Water Rights	Flow (cfs)	# of Shares	Current Use
Mountain Pipeline	2.51	241	Glade Park Irrig.
GVIC Shares – owned	0.94	90	City Irrigation
GVIC Shares – rented	3.65	350	City Irrigation
Colorado River	25.00	2,400	Unused
TOTAL	32.09	3,081	

* 1.5 cfs of mountain pipeline restricted to use along pipeline & 1.0 cfs restricted to use in Town of Fruita.

Existing Irrigation Sources in Fruita



Existing Irrigation Service Types

Type 1 City to end user
 •Low pressure (<5 psi)
 •Individual pumps

Type 2 City to subdivision
 •Low pressure / individual pumps necessary OR
 •Central HOA pump (60 psi)

Type 3 GVIC to subdivision (All others)
 •Low pressure / individual pumps necessary OR
 •Central HOA pump (60 psi)

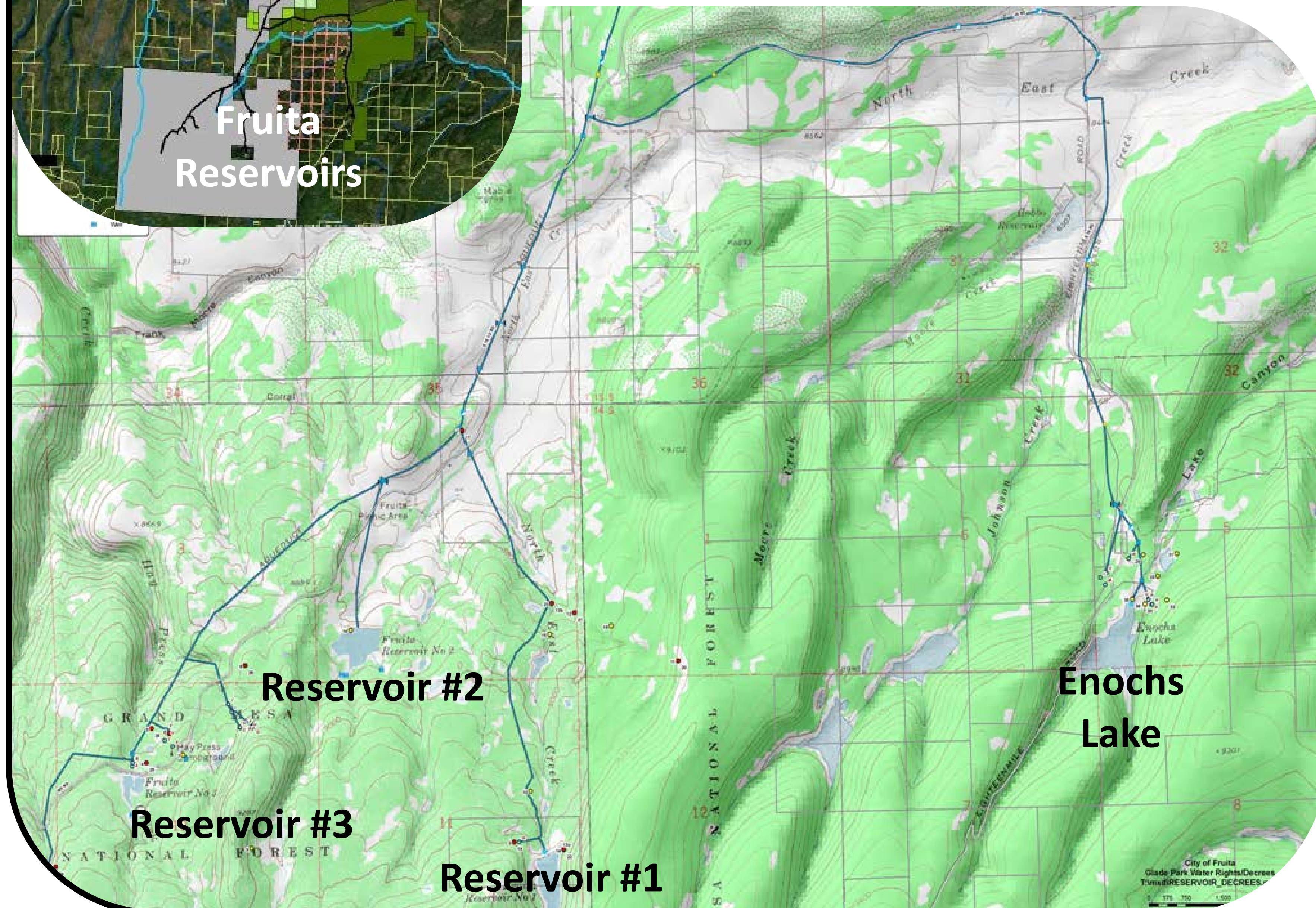
City Irrigation
758 Customers
440 GVIC Shares

Decreed Storage Rights on Mountain

The following table summarizes the amount of water allowed to be stored in the Fruita Reservoirs.

Reservoir	Case No.	Storage Right
Fruita Reservoir #1	CA5812	62.2 ac-ft
Fruita Reservoir #1, Enlargement	CA8303	80.58 ac-ft
Fruita Reservoir #2	CA8303	25.97 ac-ft
Fruita Reservoir #2, Enlargement	CA8303	141.86 ac-ft
Fruita Reservoir #3	CA5812	45.9 ac-ft
Fruita Reservoir #4 *	CA8303	54.53 ac-ft
Enoch's Reservoir (aka Mirror Lake #1)	CA8303	163.30 ac-ft
Enoch's Reservoir (aka Mirror Lake #1), Enlargement	CA8303	43.7 ac-ft
TOTAL		618.04 ac-ft

* Fruita Reservoir #4 was never constructed and cannot be considered a usable right.





MOUNTAIN WATER MAINTENANCE



Toilet Facilities



Reservoir Monitoring & Maintenance



Pipeline Maintenance

27 miles of pipe

MAINTENANCE
\$90,000 / YEAR



MAJOR CAPITAL PROJECTS

Year	Project	Project Costs	
2004	Pipeline Measurement Improvements	\$	26,869
2005	Enochs Dam Repair	\$	387,407
2006	Reservoir #2 Repairs	\$	10,000
2008	Reservoir #1 Design & Permitting	\$	115,818
2009	Reservoir #1 Dam Reconstruction	\$	637,051
2012	Reservoir #3 Spillway Design	\$	46,723
2013	Reservoir #3 Spillway Construction	\$	96,881
2016	Reservoir #2 Safety Evaluation	\$	45,300
TOTAL		\$	1,339,181

* The total project expenses reflected in this table do not include expenses related to salaries of City Staff for project management, nor do they include expenses incurred by the Army National Guard on Reservoir #1.



Reservoir #1 Dam Reconstruction



Reservoir #1 Outlet

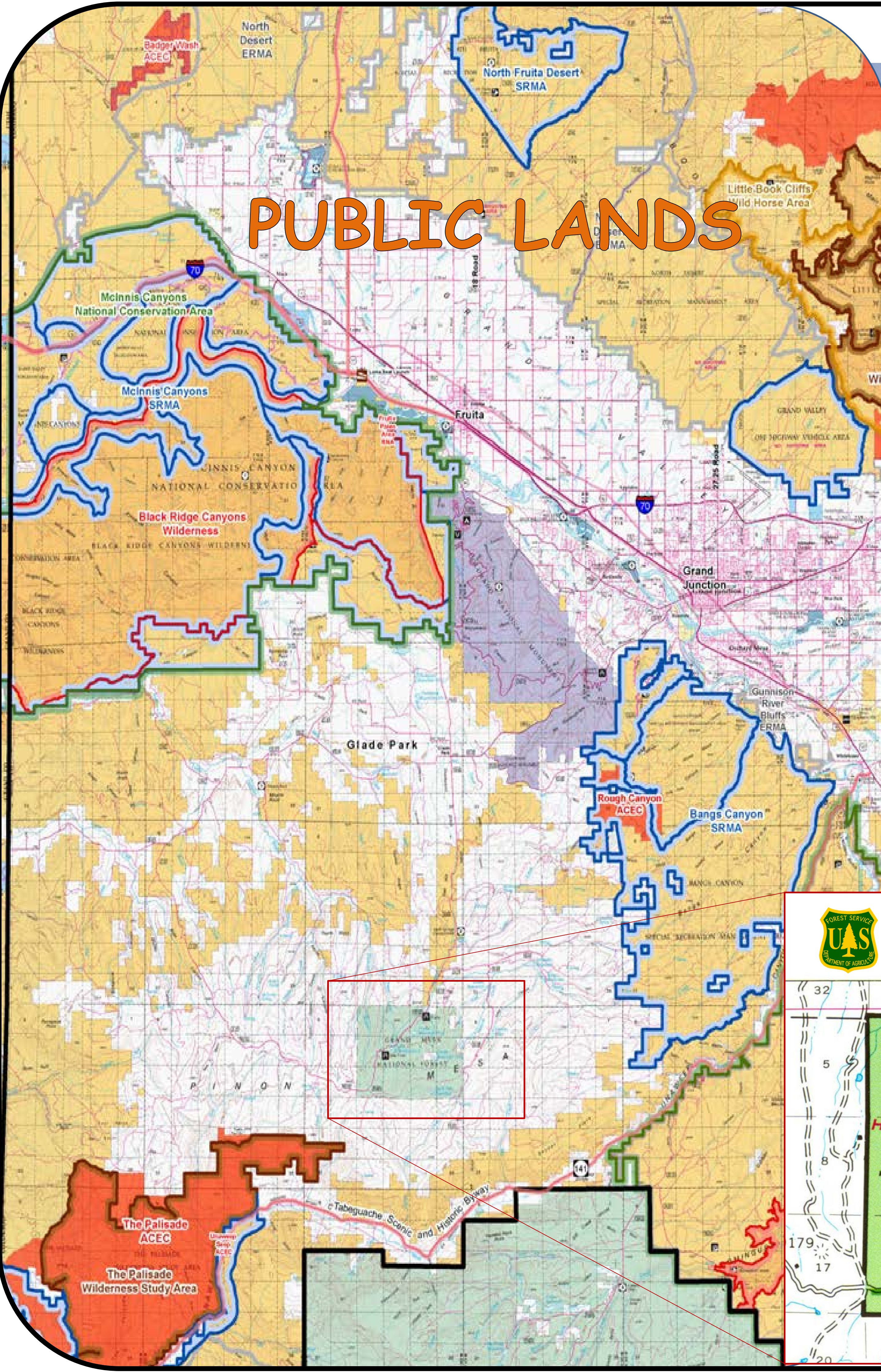


Reservoir #3 Spillway



Reservoir #2 Dam Repair?

PUBLIC LANDS



RECREATION

Public lands on Pinon Mesa have a wide variety of designated trails for hiking, mountain biking, ATV, horseback, and other recreational uses.



CAMPING

- Dispersed camping is allowed in Fruita Division of Grand Mesa National Forest, which includes Haypress Campground.
- Mud Springs is a fee campground operated by the BLM.
- Camping is not allowed on City of Fruita properties and are open for Day Use Only.



TRAILS

Turkey Flats and Black Pine Loops

Getting to the Trailhead
 These trails are in the Pinon Mesa area west of Grand Junction and south of Glade Park. To get there from the downtown Grand Junction area head west on Grand Ave, across the river to Monument Road, and turn left. Head up to the entrance to Colorado National Monument (tell them you're going to the Glade Park area and there's no charge). Go up the Monument for 3.9 miles to DS Road (it's left turn). Take DS Road 5.6 miles to 16 1/2 Road, turn left (the Glade Park Store is on the right in case you forgot any drinks or food). Take 16 1/2 Road for 10.9 miles to a dirt parking area on the right and you're there (at 10.6 miles there's a fork in the road, bear right).

This area gets lots of snow in the winter and is muddy in the spring, so the best time to ride here is typically June through October.

Legend:
 Trailhead
 Mountain Bike Trail Difficulty: Easy, Intermediate, Difficult
 Ridge Trail Corridor
 2nd Road, High Clearance or 4wd Road
 National Forest, Private Property, Forest Service Road ID, Distance Between Points in Miles

This map was created by COPMOBA in 2014 using the best information available. Mountain biking can be a dangerous sport so be careful and if anything goes wrong it isn't our fault. If you happen to have any comments send them to: volocartographer@gmail.com. This map and other Grand Junction area trail maps can be found at www.copmobas.org

PICNICING



FISHING

WELCOME TO

ENOCH'S LAKE



FRUITA COLORADO

DAY USE ONLY

IN ORDER TO PROTECT THE RESOURCES AND TO BETTER SERVE YOU, PLEASE OBSERVE THE FOLLOWING REGULATIONS:

1. NO OVERNIGHT CAMPING OR PARKING. FACILITY HOURS ARE FROM 6:00 AM TO 11:00 PM.
2. CAMPFIRES AND FIREWORKS ARE PROHIBITED.
3. LITTERING PROHIBITED. USE PROPER RECEPTACLE FOR TRASH, WASTE, AND SEWAGE.
4. IT IS UNLAWFUL TO DISCHARGE FIREARMS ON CITY OF FRUITA PROPERTY.
5. PETS MUST BE UNDER OWNER'S CONTROL AT ALL TIMES.
6. VEHICLES MUST REMAIN ON DESIGNATED ROADWAYS AND PADS.
7. ALL FISHERMEN MUST HAVE A VALID COLORADO FISHING LICENSE.
8. NO GAS POWERED BOATS ARE PERMITTED ON THE LAKE.

BY ORDER OF THE CITY OF FRUITA
 EFFECTIVE August 1, 2016

FRUITA DIVISION

R.102W. GRAND JUNCTION 22 MILES
 GLADE PARK 9 MILES

MOUNTAIN PROPERTIES

City of Fruita Mountain Properties

The areas shown in the following table list the properties on Pinon Mesa that the City of Fruita has real interest in. This table does not include easements for pipeline or maintenance access.

Map No.	Location	Acres	Description
1	Fruita Reservoir #1	80.8	North half of reservoir
2	Fruita Reservoir #2	0.0	Grand Mesa National Forest
3	Fruita Reservoir #3	0.0	Grand Mesa National Forest
4	Fruita Reservoir #4	125.5	Reservoir never constructed
5	Enoch's Lake	51.4	Lake (surrounded by private properties)
5A	Mirror Springs 1	2.0	Springs north of Enoch
5B	Mirror Springs 2	4.0	Springs north of Enoch
Total		263.7	acres owned by the City of Fruita

