

**LEGEND**

- Trailheads
- ~ Steams/Washes
- ▬ Lakes/Rivers
- ▬ Canals

**Major Roads**

- ▬ Limited Access
- ▬ Highways
- ▬ Secondary Roads
- - - Other
- ▬ Highway Ramp
- ▬ Railroad
- ▭ Municipal Boundaries

**Public Lands**

- ▭ State Lands
- ▭ National Park Service
- ▭ US Bureau of Land Management
- ▭ Bureau of Reclamation
- ▭ US Forest Service
- ▭ City Property
- ▭ Mesa County

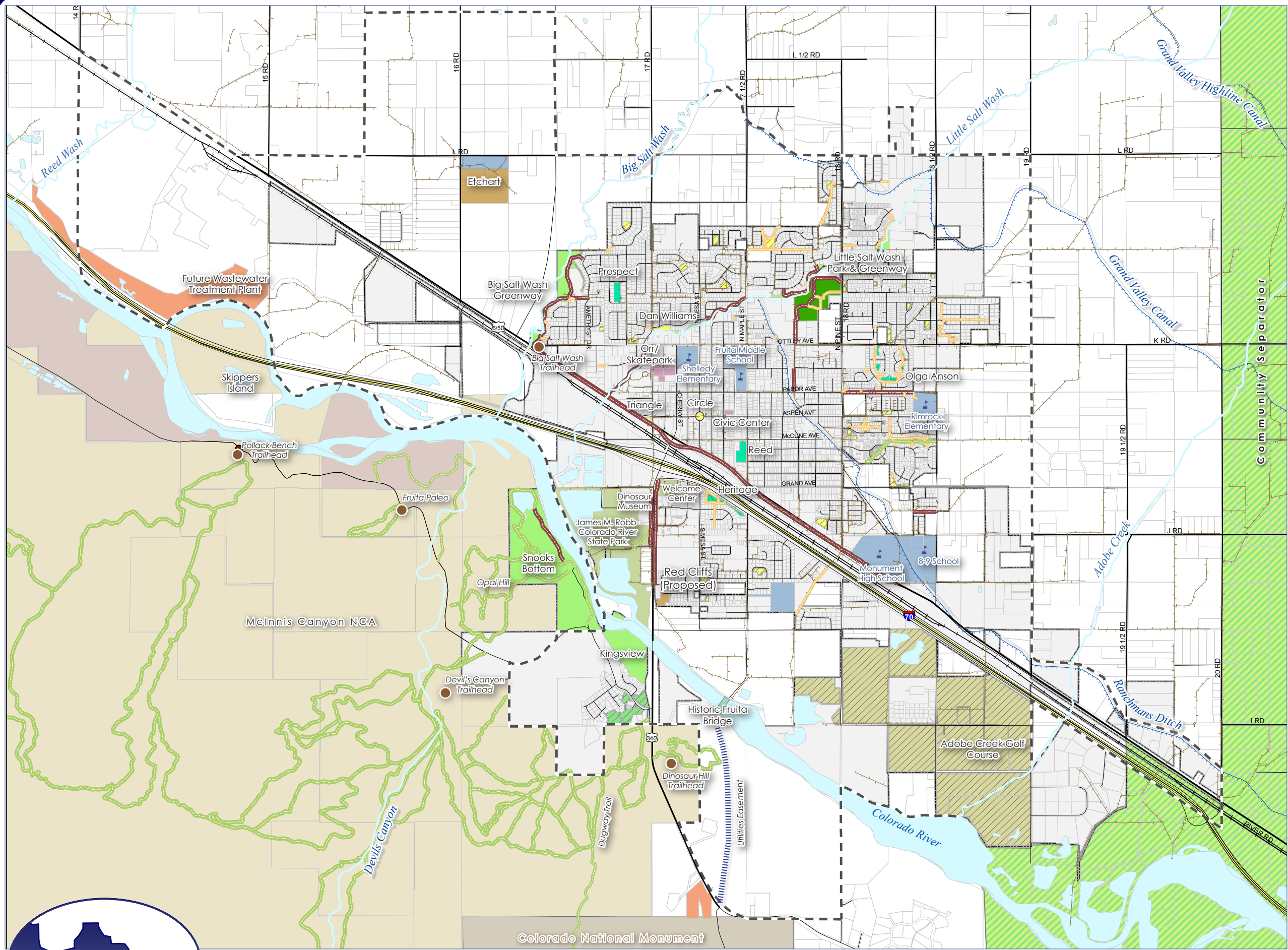
▬ Existing Riverfront Trail

▬ Planned Riverfront Trail

## Map 1: Regional Context



# City of Fruita Parks, Open Space & Trails Plan



### LEGEND

**Boundaries**

- City Limits
- Urban Growth Boundary

**Schools**

- Schools
- School Property

**Trail Network**

- Trailheads

**Existing Trails**

- Primary
- Local
- Unpaved

**Utilities & Hydrology**

- Canals
- Washes
- Drainages

**Private Parks and Open Space**

- Golf Course
- HOA/Pocket Park
- Open Space
- Target Area for Private Open Space

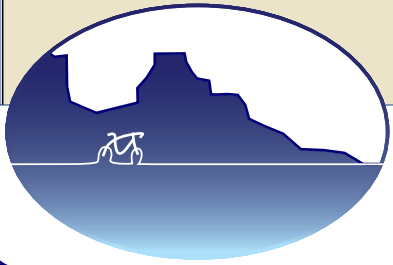
**Fruita Public Lands**

- Community Park
- Neighborhood Park
- Pocket Park
- Open Space
- Trail ROW
- Special Purpose
- Undeveloped Parkland
- Other

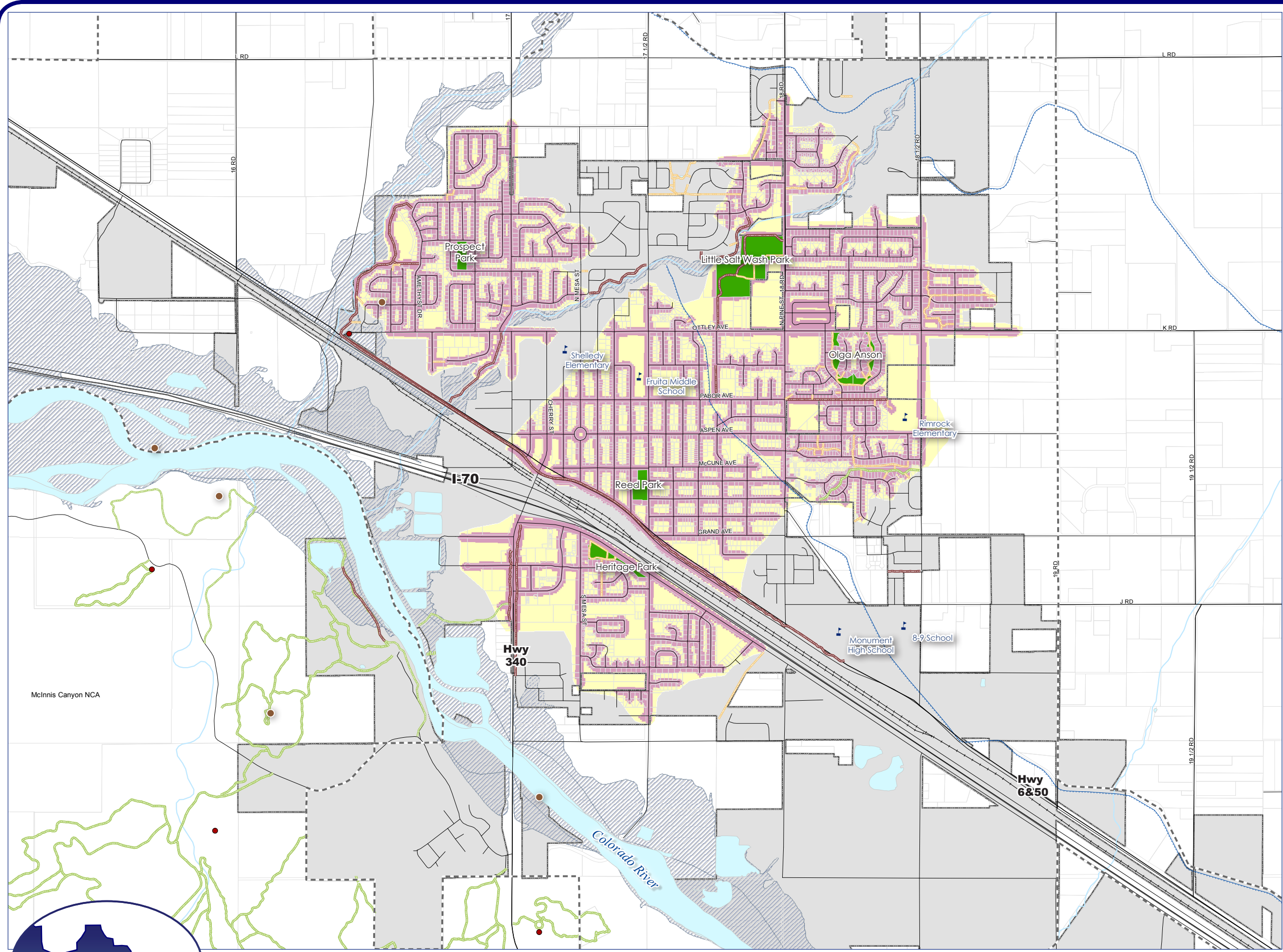
**Public Lands**

- Colorado Division of Wildlife
- National Park Service
- US Bureau of Land Management
- US Bureau of Reclamation
- State Lands

## Map 2: Existing Resources

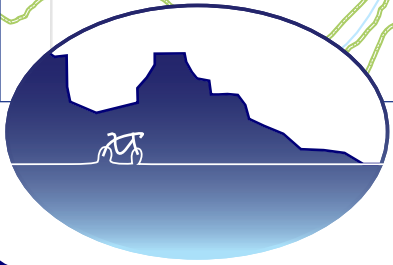
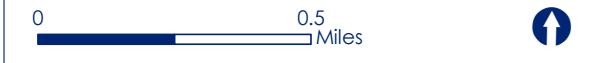


# City of Fruita Parks, Open Space & Trails Plan

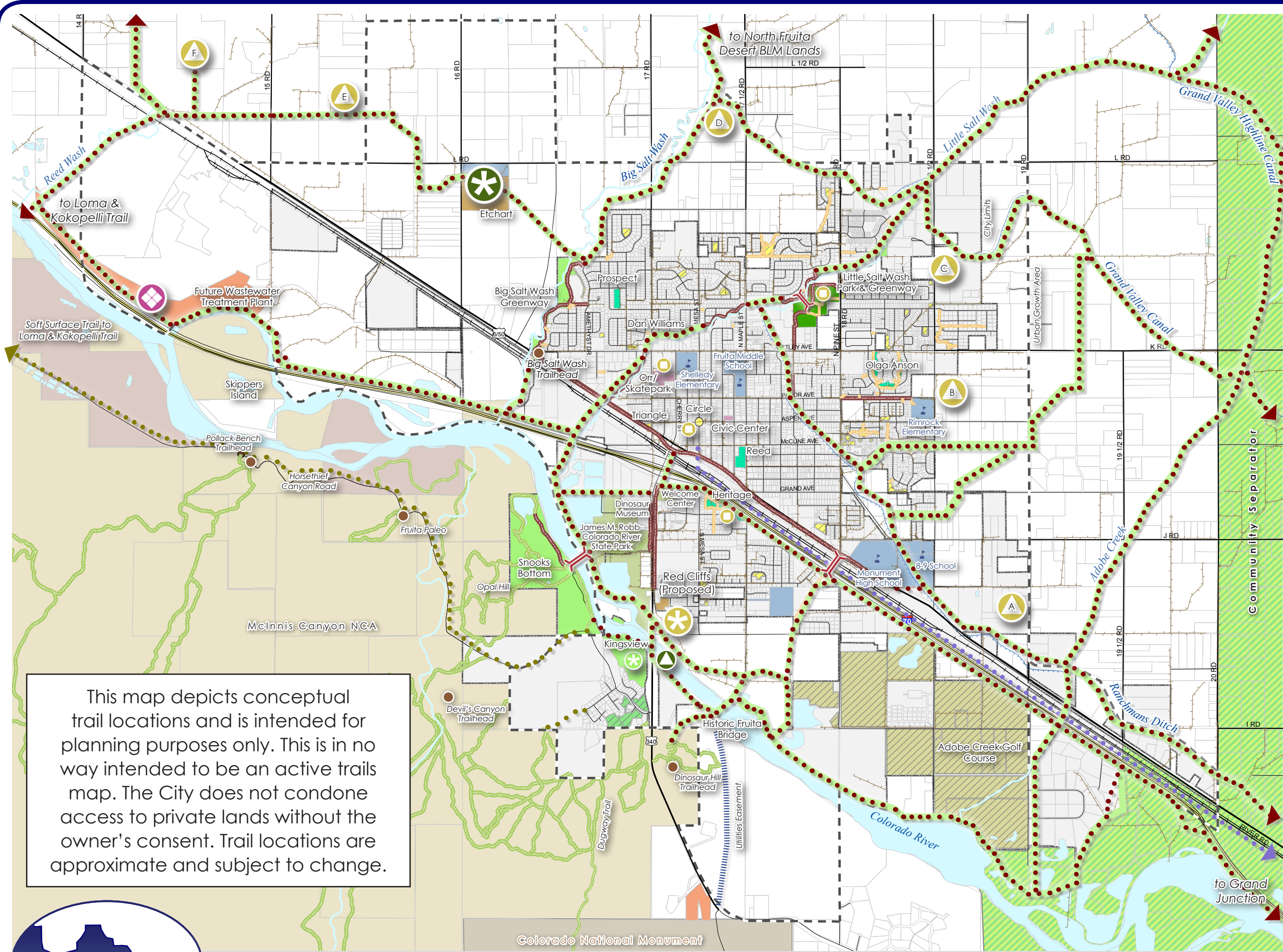


- LEGEND**
- City Limits
  - Urban Growth Area
  - Parcel Boundaries
  - 100-Year Floodplain
  - Schools
  - Trailheads
  - Primary Multi-Purpose Trail
  - Neighborhood Trail
  - Soft Surface Trail
  - Neighborhood and Community Parks
  - Half Mile Walking Routes
  - Half Mile Service Area

### Map 3: Existing Neighborhood Service Areas



# City of Fruita Parks, Open Space & Trails Plan



### LEGEND

**Existing Resources**

- Boundaries
  - City Limits
  - Urban Growth Boundary
- Schools
  - School Property
- Trail Network
  - Existing Trails
    - Primary
    - Local
    - Unpaved
- Private Parks and Open Space
  - Golf Course
  - HOA/Pocket Park
  - Open Space
  - Target Area for Private Open Space
- Fruita Public Lands
  - Community Park
  - Neighborhood Park
  - Pocket Park
  - Open Space
  - Trail ROW
  - Special Purpose
  - Undeveloped Parkland
  - Other

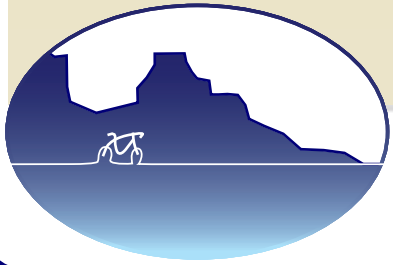
**Proposed Resources**

- Develop New Community Park/River Park
- Develop Existing Community Parkland Site
- Develop Future Sports Complex
- Develop New Neighborhood Park
- Develop Existing Neighborhood Parkland Site
- Upgrade Existing Park
- Enhance Existing Open Space
- Pedestrian Bridge
- Primary Multi-Purpose Trail
- Commuter Bike Trail
- Soft Surface Trail

**Map 4: Master Plan**

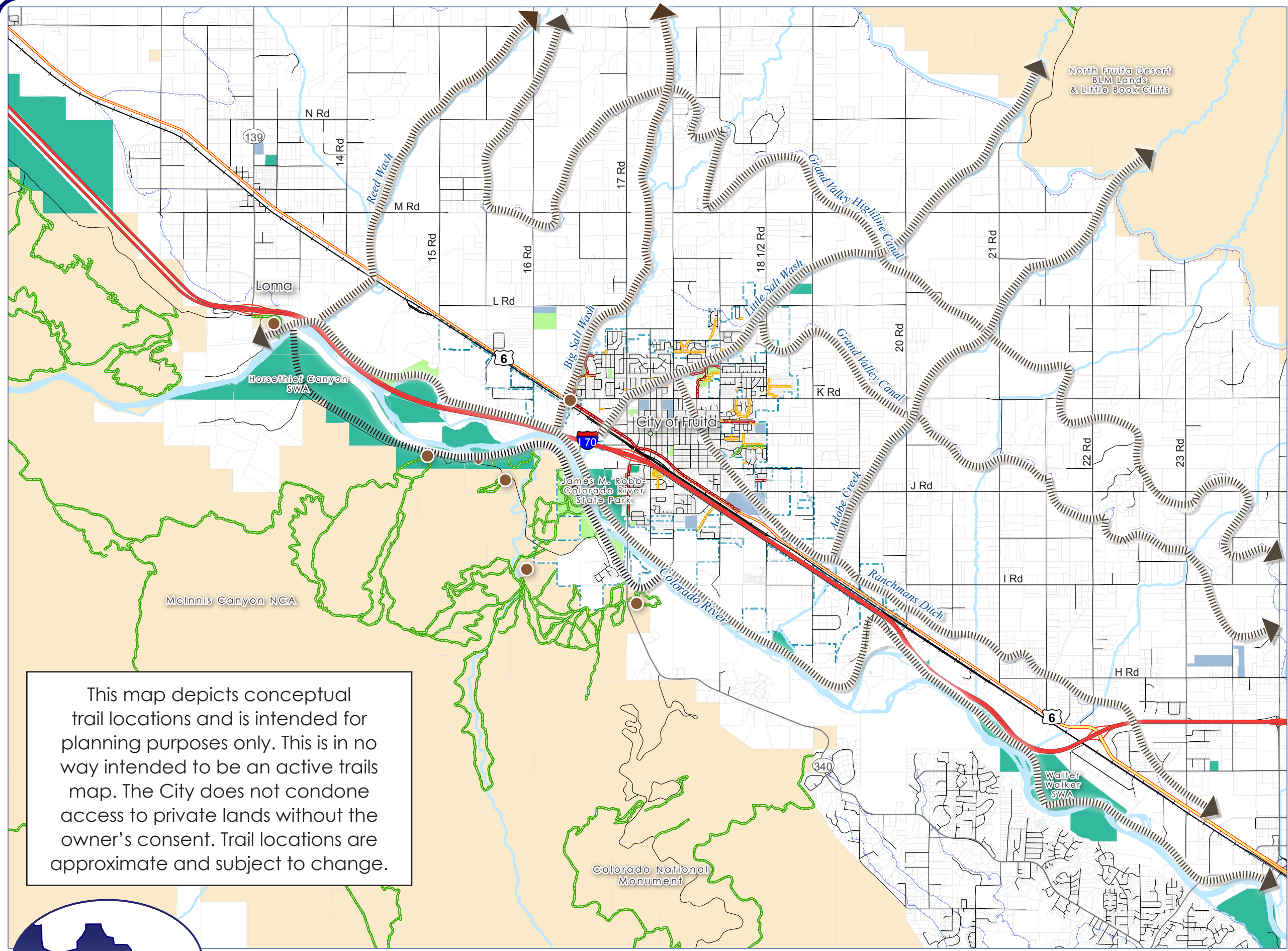
0 1 Miles

This map depicts conceptual trail locations and is intended for planning purposes only. This is in no way intended to be an active trails map. The City does not condone access to private lands without the owner's consent. Trail locations are approximate and subject to change.



# City of Fruita Parks, Open Space & Trails Plan

December 2009



**LEGEND**

- City Limits
- Trailheads

**Existing Trails**

- Primary
- Neighborhood
- Soft Surface
- Steams/Washes
- Lakes/Rivers
- Canals

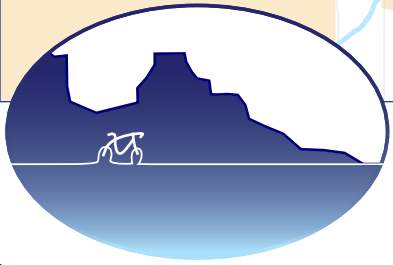
**Land Ownership**

- City of Fruita
- School District
- State of Colorado
- Federal

Trails of Regional Significance

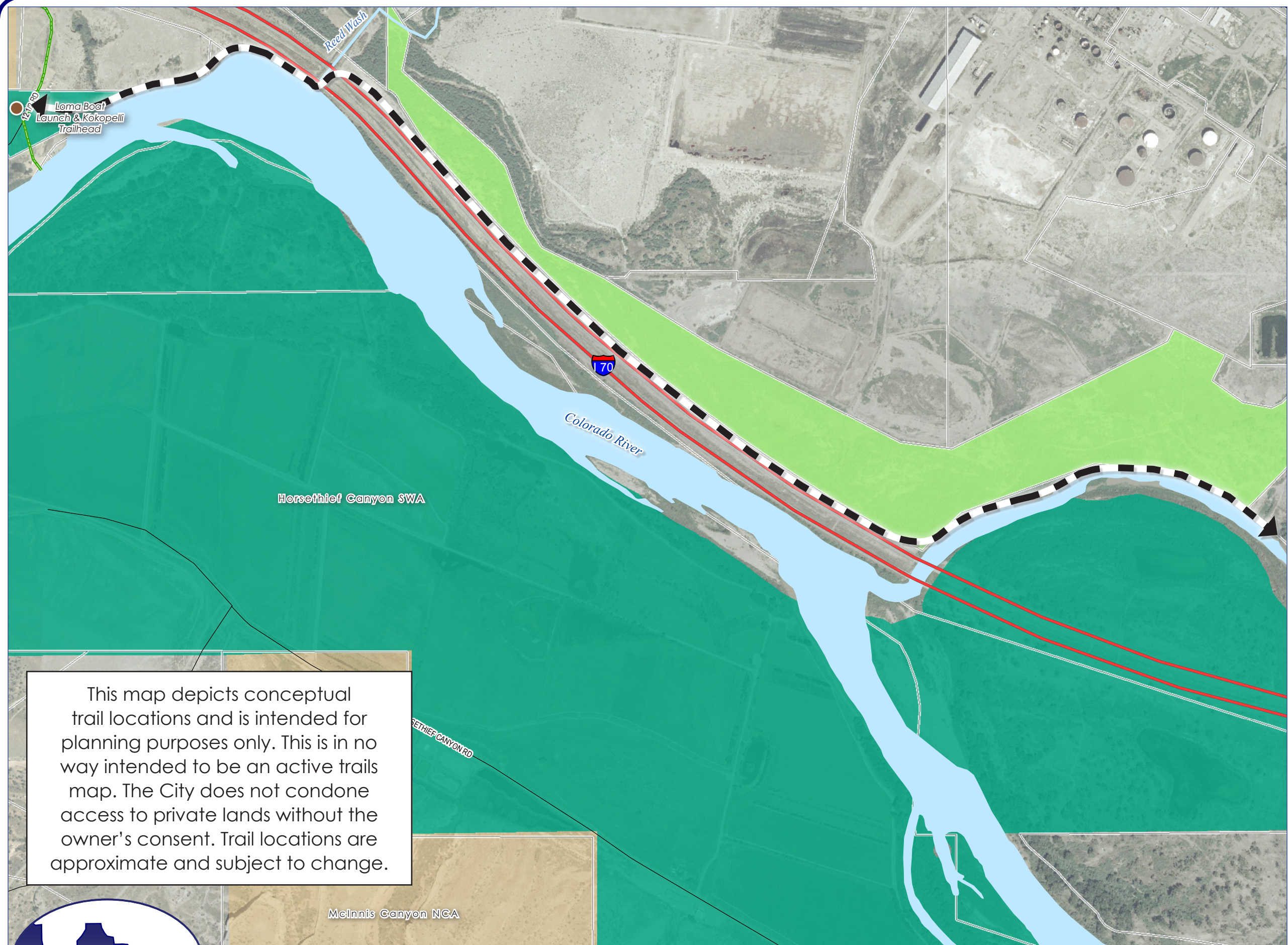
This map depicts conceptual trail locations and is intended for planning purposes only. This is in no way intended to be an active trails map. The City does not condone access to private lands without the owner's consent. Trail locations are approximate and subject to change.

## Map 5: Regional Trails Vision



# City of Fruita Parks, Open Space & Trails Plan

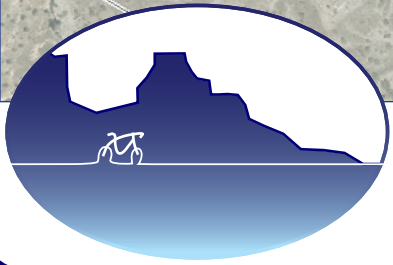
December 2009



**LEGEND**

- City Limits
- Trailheads
- Existing Trails**
  - Primary
  - Neighborhood
  - Soft Surface
  - Steams/Washes
  - Lakes/Rivers
  - Canals
- Land Ownership**
  - City of Fruita
  - School District
  - State of Colorado
  - Federal
- Proposed Riverfront Trail

This map depicts conceptual trail locations and is intended for planning purposes only. This is in no way intended to be an active trails map. The City does not condone access to private lands without the owner's consent. Trail locations are approximate and subject to change.

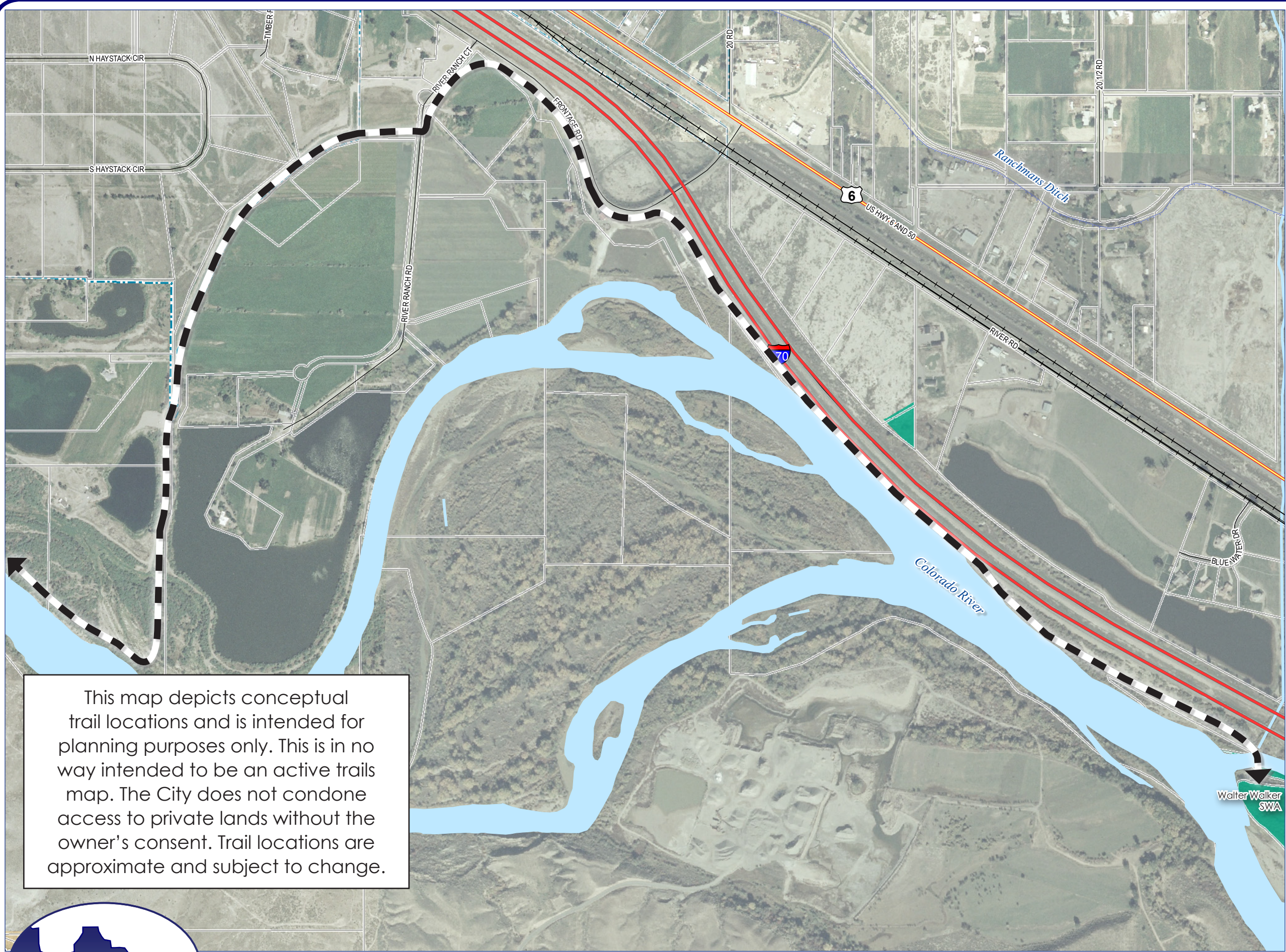


# City of Fruita Parks, Open Space & Trails Plan

## Map 6a: Riverfront Trail Plan



December 2009

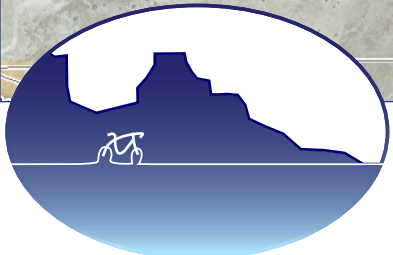


**LEGEND**

- City Limits
- Trailheads
- Existing Trails**
- Primary
- Neighborhood
- Soft Surface
- Steams/Washes
- Lakes/Rivers
- Canals
- Land Ownership**
- City of Fruita
- School District
- State of Colorado
- Federal
- Proposed Riverfront Trail**

This map depicts conceptual trail locations and is intended for planning purposes only. This is in no way intended to be an active trails map. The City does not condone access to private lands without the owner's consent. Trail locations are approximate and subject to change.

**Map 6b:  
Riverfront Trail Plan**



Appendix A: City of Fruita POST Master Plan  
December 2009

| Name  | Total Ac.    | Devel. Ac.   | Trail Miles | Drinking Fountains | Baseball Field | Softball Field | Multi-Use Field - Turf | Basketball Court | Tennis Court | Volleyball | Walking Path/Paved Trail | Tot Lot | Playground | Picnic Tables | Pavilion/Picnic Shelter | Multi-use Paved Court | Museum/Historical Site | Recreation Center | Community Center | Outdoor Pool | Water-play Feature | Natural Environment | Rest Rooms/San-o-lets | Concession | Bike Parking | Barbecues | Horseshoes | Climbing Wall | Off-street Parking Lot | Amphitheater | Dog Park/Off-Leash Area | Skatepark | In-Line Hockey | Art/Sculpture | Disc Golf | Fishing | Comments |  |  |                                   |   |
|---|--------------|--------------|-------------|--------------------|----------------|----------------|------------------------|------------------|--------------|------------|--------------------------|---------|------------|---------------|-------------------------|-----------------------|------------------------|-------------------|------------------|--------------|--------------------|---------------------|-----------------------|------------|--------------|-----------|------------|---------------|------------------------|--------------|-------------------------|-----------|----------------|---------------|-----------|---------|----------|--|--|-----------------------------------|---|
|   |              |              |             |                    |                |                |                        |                  |              |            |                          |         |            |               |                         |                       |                        |                   |                  |              |                    |                     |                       |            |              |           |            |               |                        |              |                         |           |                |               |           |         |          |  |  |                                   |   |
| <b>PARKS - NEIGHBORHOOD PARKS</b>                     |              |              |             |                    |                |                |                        |                  |              |            |                          |         |            |               |                         |                       |                        |                   |                  |              |                    |                     |                       |            |              |           |            |               |                        |              |                         |           |                |               |           |         |          |  |  |                                   |   |
| <b>NEIGHBORHOOD PARKS</b>                             |              |              |             |                    |                |                |                        |                  |              |            |                          |         |            |               |                         |                       |                        |                   |                  |              |                    |                     |                       |            |              |           |            |               |                        |              |                         |           |                |               |           |         |          |  |  |                                   |   |
| Reed Park   | 3.30         | 3.30         |             | x                  |                |                | 1                      | 1                |              |            |                          | x       | x          | x             | x                       |                       |                        |                   |                  |              |                    |                     | x                     |            |              | x         | x          |               |                        |              |                         |           |                |               |           |         |          |  |  |                                   |   |
| Prospect  | 2.43         | 2.40         |             |                    |                |                | 1                      |                  |              |            | x                        |         | x          |               |                         |                       |                        |                   |                  |              |                    |                     |                       |            |              |           |            |               |                        |              |                         |           |                |               |           |         |          |  |  |                                   |   |
| Olga Anson  | 7.00         | 5.39         | 1.27        |                    |                |                |                        |                  |              | x          |                          | x       |            |               |                         |                       |                        |                   |                  |              |                    |                     |                       |            |              |           |            |               |                        |              |                         |           |                |               |           |         |          |  |  |                                   |   |
| Heritage  | 3.51         | 2.00         |             |                    |                |                |                        | 1                |              |            |                          | x       | x          |               |                         |                       |                        |                   |                  |              |                    | x                   |                       |            |              |           |            |               | x                      |              |                         |           |                |               |           |         |          |  |  |                                   |   |
| <b>Total Neighborhood Parks Acreage</b>               | <b>16.24</b> | <b>13.09</b> |             |                    |                |                |                        |                  |              |            |                          |         |            |               |                         |                       |                        |                   |                  |              |                    |                     |                       |            |              |           |            |               |                        |              |                         |           |                |               |           |         |          |  |  |                                   |   |
| <b>POCKET PARKS- Publicly Owned</b>                   |              |              |             |                    |                |                |                        |                  |              |            |                          |         |            |               |                         |                       |                        |                   |                  |              |                    |                     |                       |            |              |           |            |               |                        |              |                         |           |                |               |           |         |          |  |  |                                   |   |
| Circle  | 0.84         | 0.84         |             |                    |                |                |                        |                  |              |            |                          |         |            | x             | x                       |                       |                        |                   |                  |              |                    |                     |                       |            |              |           |            |               |                        |              |                         |           |                |               |           |         |          |  |  | x                                 |   |
| Triangle  | 0.42         | 0.42         |             |                    |                |                |                        |                  |              |            |                          |         |            | x             |                         |                       |                        |                   |                  |              |                    |                     |                       |            |              | x         |            |               |                        |              |                         |           |                |               |           |         |          |  |  |                                   | x   |
| Danny Williams (Roberson)                             | 1.33         | 1.33         |             |                    |                |                |                        |                  |              |            |                          |         |            | x             |                         |                       |                        |                   |                  |              |                    |                     |                       |            |              |           | x          |               |                        |              |                         |           |                |               |           |         |          |  |  |                                   |   |
| <b>Total Public Pocket Parks Acreage</b>              | <b>2.59</b>  | <b>2.59</b>  |             |                    |                |                |                        |                  |              |            |                          |         |            |               |                         |                       |                        |                   |                  |              |                    |                     |                       |            |              |           |            |               |                        |              |                         |           |                |               |           |         |          |  |  |                                   |   |
| <b>Total Public Neighborhood/Pocket Parks Acreage</b> | <b>18.83</b> | <b>15.68</b> |             |                    |                |                |                        |                  |              |            |                          |         |            |               |                         |                       |                        |                   |                  |              |                    |                     |                       |            |              |           |            |               |                        |              |                         |           |                |               |           |         |          |  |  |                                   |   |
| <b>POCKET PARKS-Privately Owned</b>                   |              |              |             |                    |                |                |                        |                  |              |            |                          |         |            |               |                         |                       |                        |                   |                  |              |                    |                     |                       |            |              |           |            |               |                        |              |                         |           |                |               |           |         |          |  |  |                                   |   |
| Adobe Falls   | 2.22         | 2.22         |             |                    |                |                |                        |                  |              |            |                          | P       |            |               |                         |                       |                        |                   |                  |              |                    |                     |                       |            |              |           |            |               |                        |              |                         |           |                |               |           |         |          |  |  |                                   | Proposed pond   |
| Brandon Estates                                       | 1.89         | 1.89         |             |                    |                |                |                        |                  |              |            |                          | x       | P          | x             |                         |                       |                        |                   |                  |              |                    |                     |                       |            |              |           |            |               |                        |              |                         |           |                |               |           |         |          |  |  |                                   | (2) separate parcels; playground area with seating          |
| Cedar Park  | 1.45         | 1.45         |             |                    |                |                | x                      |                  |              |            |                          |         |            |               |                         |                       |                        |                   |                  |              |                    |                     |                       |            |              |           |            |               |                        |              |                         |           |                |               |           |         |          |  |  |                                   | open field  |
| Comstock Estates                                      | 0.83         | 0.83         |             |                    |                |                | x                      |                  |              |            |                          |         |            |               |                         |                       |                        |                   |                  |              |                    |                     |                       |            |              |           |            |               |                        |              |                         |           |                |               |           |         |          |  |  |                                   |   |
| Cottonwoods   | 1.97         | 1.97         |             |                    |                |                |                        |                  |              |            |                          | x       |            |               |                         |                       |                        |                   |                  |              |                    |                     |                       |            |              |           |            |               |                        |              |                         |           |                |               |           |         |          |  |  |                                   | (2) separate parcels; open space with trees, trail and turf |
| Cottonwoods PUD                                       | 1.61         | 1.61         |             |                    |                |                |                        |                  |              |            |                          |         |            |               |                         |                       |                        |                   |                  |              |                    |                     |                       |            |              |           |            |               |                        |              |                         |           |                |               |           |         |          |  |  |                                   |   |
| Echo Canyon   | 1.33         | 1.33         |             |                    |                |                | x                      |                  |              |            |                          | x       | x          |               |                         |                       |                        |                   |                  |              |                    |                     |                       |            |              |           |            |               |                        |              |                         |           |                |               |           |         |          |  |  |                                   | Additional toddler swings                                   |
| Elmwood Estates                                       | 0.07         | 0.07         |             |                    |                |                | x                      |                  |              |            |                          |         |            |               |                         |                       |                        |                   |                  |              |                    |                     |                       |            |              | x         |            |               |                        |              |                         |           |                |               |           |         |          |  |  |                                   | Gazebo with picnic tables; grills and benches               |
| Elmwood Heights                                       | 0.93         | 0.93         |             |                    |                |                | x                      |                  |              |            |                          |         |            |               |                         |                       |                        |                   |                  |              |                    |                     |                       |            |              |           |            |               |                        |              |                         |           |                |               |           |         |          |  |  | Open Field with meditative garden |   |
| Gewont Townhomes                                      | 0.15         | 0.15         |             |                    |                |                |                        |                  |              |            |                          |         |            |               |                         |                       |                        |                   |                  |              |                    |                     |                       |            |              |           |            |               |                        |              |                         |           |                |               |           |         |          |  |  |                                   |   |
| Grand Valley Estates                                  | 0.78         | 0.78         |             |                    |                |                |                        |                  |              |            |                          |         |            |               |                         |                       |                        |                   |                  |              |                    |                     |                       |            |              |           |            |               |                        |              |                         |           |                |               |           |         |          |  |  |                                   | 6-post Covered pergola                                      |
| Hollow Creek  | 0.28         | 0.28         |             |                    |                |                |                        |                  |              |            |                          |         |            |               |                         |                       |                        |                   |                  |              |                    |                     |                       |            |              |           |            |               |                        |              |                         |           |                |               |           |         |          |  |  |                                   |   |
| Legacy Subdivision                                    | 0.64         | 0.64         |             |                    |                |                |                        |                  |              |            |                          |         |            |               |                         |                       |                        |                   |                  |              |                    |                     |                       |            |              |           |            |               |                        |              |                         |           |                |               |           |         |          |  |  |                                   | Additional Sandboxes  |
| Liberty Glen  | 0.45         | 0.45         |             |                    |                |                | x                      | x                |              |            |                          |         |            |               |                         |                       |                        |                   |                  |              |                    |                     |                       |            |              |           |            |               |                        |              |                         |           |                |               |           |         |          |  |  |                                   |   |
| Maple Grove   | 0.29         | 0.29         |             |                    |                |                |                        |                  |              |            |                          |         |            |               |                         |                       |                        |                   |                  |              |                    |                     |                       |            |              |           |            |               |                        |              |                         |           |                |               |           |         |          |  |  |                                   | (2) approx. 1 acre. Parcels of open turf area               |
| Orchard Ridge   | 1.00         | 1.00         |             |                    |                |                |                        |                  |              |            |                          |         |            |               |                         |                       |                        |                   |                  |              |                    |                     |                       |            |              |           |            |               |                        |              |                         |           |                |               |           |         |          |  |  |                                   |   |
| Orchard Valley West                                   | 0.85         | 0.85         |             |                    |                |                |                        | x                |              |            |                          |         |            |               |                         |                       |                        |                   |                  |              |                    |                     |                       |            |              |           |            |               |                        |              |                         |           |                |               |           |         |          |  |  |                                   | Swings; jungle gym; slide                                   |
| Pinedale  | 0.61         | 0.61         |             |                    |                |                |                        |                  |              |            |                          |         |            |               |                         |                       |                        |                   |                  |              |                    |                     |                       |            |              |           |            |               |                        |              |                         |           |                |               |           |         |          |  |  |                                   | Small turf and gravel area with trail                       |
| The Queens  | 0.37         | 0.37         |             |                    |                |                |                        | x                |              |            |                          |         |            |               |                         |                       |                        |                   |                  |              |                    |                     |                       |            |              |           |            |               |                        |              |                         |           |                |               |           |         |          |  |  |                                   | Swings; Climbing "spider"                                   |
| Red Rocks   | 0.27         | 0.27         |             |                    |                |                |                        |                  |              |            |                          |         |            |               |                         |                       |                        |                   |                  |              |                    |                     |                       |            |              |           |            |               |                        |              |                         |           |                |               |           |         |          |  |  |                                   | Grass with trees and trail                                  |
| River Glen  | 0.25         | 0.25         |             |                    |                |                |                        |                  |              |            |                          |         |            |               |                         |                       |                        |                   |                  |              |                    |                     |                       |            |              |           |            |               |                        |              |                         |           |                |               |           |         |          |  |  |                                   |   |
| Santa Ana   | 0.36         | 0.36         |             |                    |                |                |                        |                  |              |            |                          |         |            |               |                         |                       |                        |                   |                  |              |                    |                     |                       |            |              |           |            |               |                        |              |                         |           |                |               |           |         |          |  |  |                                   |   |
| Stone Mountain  | 1.02         | 1.02         |             |                    |                |                |                        | x                |              |            |                          |         |            |               |                         |                       |                        |                   |                  |              |                    |                     |                       |            |              |           |            |               |                        |              |                         |           |                |               |           |         |          |  |  |                                   |   |
| Vintners Farm   | 3.60         | 3.60         |             |                    |                |                |                        | x                |              |            |                          | x       | x          |               |                         |                       |                        |                   |                  |              |                    |                     |                       |            |              |           |            |               |                        |              |                         |           |                |               |           |         |          |  |  |                                   | Gazebos at pond area  |
| <b>Total Private Pocket Parks Acreage</b>             | <b>23.22</b> | <b>23.22</b> |             |                    |                |                |                        |                  |              |            |                          |         |            |               |                         |                       |                        |                   |                  |              |                    |                     |                       |            |              |           |            |               |                        |              |                         |           |                |               |           |         |          |  |  |                                   |   |



Appendix A: City of Fruita POST Master Plan  
December 2009

| Name  | Total Ac.     | Devel. Ac.   | Trail Miles | Drinking Fountains | Baseball Field | Softball Field | Multi-Use Field - Turf | Basketball Court | Tennis Court | Volleyball | Walking Path/Paved Trail | Tot Lot | Playground | Picnic Tables | Pavilion/Picnic Shelter | Multi-use Paved Court | Museum/Historical Site | Recreation Center | Community Center | Outdoor Pool | Water-play Feature | Natural Environment | Rest Rooms/San-o-lets | Concession | Bike Parking | Barbecues | Horseshoes | Climbing Wall | Off-street Parking Lot | Amphitheater | Dog Park/Off-Leash Area | Skatepark | In-Line Hockey | Art/Sculpture | Disc Golf | Fishing | Comments |  |  |  |  |  |  |                                |  |
|---|---------------|--------------|-------------|--------------------|----------------|----------------|------------------------|------------------|--------------|------------|--------------------------|---------|------------|---------------|-------------------------|-----------------------|------------------------|-------------------|------------------|--------------|--------------------|---------------------|-----------------------|------------|--------------|-----------|------------|---------------|------------------------|--------------|-------------------------|-----------|----------------|---------------|-----------|---------|----------|--|--|--|--|--|--|--------------------------------|--|
|   |               |              |             |                    |                |                |                        |                  |              |            |                          |         |            |               |                         |                       |                        |                   |                  |              |                    |                     |                       |            |              |           |            |               |                        |              |                         |           |                |               |           |         |          |  |  |  |  |  |  |                                |  |
| <b>PARKS - COMMUNITY PARKS</b>  |               |              |             |                    |                |                |                        |                  |              |            |                          |         |            |               |                         |                       |                        |                   |                  |              |                    |                     |                       |            |              |           |            |               |                        |              |                         |           |                |               |           |         |          |  |  |  |  |  |  |                                |  |
| <b>COMMUNITY PARKS</b>  |               |              |             |                    |                |                |                        |                  |              |            |                          |         |            |               |                         |                       |                        |                   |                  |              |                    |                     |                       |            |              |           |            |               |                        |              |                         |           |                |               |           |         |          |  |  |  |  |  |  |                                |  |
| Little Salt Wash Park   | 22.77         | 18.00        | 0.85        |                    | 1              | 3              | 1                      |                  |              | x          |                          | x       |            |               |                         |                       |                        |                   |                  |              | x                  |                     |                       |            |              |           |            |               |                        |              |                         |           |                |               |           |         |          |  |  | Park is being developed in phases. Future phases include drinking fountains, tot lot, bathrooms, concessions, shelters / pavilion. |  |  |  |                                |  |
| <b>Total Community Parks Acreage</b>                                      | <b>22.77</b>  | <b>18.00</b> |             |                    |                |                |                        |                  |              |            |                          |         |            |               |                         |                       |                        |                   |                  |              |                    |                     |                       |            |              |           |            |               |                        |              |                         |           |                |               |           |         |          |  |  |  |  |  |  |                                |  |
| <b>SPORTS COMPLEXES</b>   |               |              |             |                    |                |                |                        |                  |              |            |                          |         |            |               |                         |                       |                        |                   |                  |              |                    |                     |                       |            |              |           |            |               |                        |              |                         |           |                |               |           |         |          |  |  |  |  |  |  |                                |  |
| Tennis Courts at 8/9 School   |               |              |             | x                  |                |                |                        | 2                |              |            |                          |         |            |               |                         |                       |                        |                   |                  |              |                    |                     |                       |            |              |           |            |               |                        |              |                         |           |                |               |           |         |          |  |  |  | City of Fruita maintained and used by schools                              |  |  |                                |  |
| <b>Total Sports Complexes Acreage</b>                                     | <b>0.00</b>   | <b>0.00</b>  |             |                    |                |                |                        |                  |              |            |                          |         |            |               |                         |                       |                        |                   |                  |              |                    |                     |                       |            |              |           |            |               |                        |              |                         |           |                |               |           |         |          |  |  |  |  |  |  |                                |  |
| <b>Total Community Parks/Sports Complexes Acreage</b>                     | <b>22.77</b>  | <b>18.00</b> |             |                    |                |                |                        |                  |              |            |                          |         |            |               |                         |                       |                        |                   |                  |              |                    |                     |                       |            |              |           |            |               |                        |              |                         |           |                |               |           |         |          |  |  |  |  |  |  |                                |  |
| <b>PARKS - SPECIAL PURPOSE PARKS</b>                                      |               |              |             |                    |                |                |                        |                  |              |            |                          |         |            |               |                         |                       |                        |                   |                  |              |                    |                     |                       |            |              |           |            |               |                        |              |                         |           |                |               |           |         |          |  |  |  |  |  |  |                                |  |
| Civic Center  | 1.87          | 1.87         |             |                    |                |                |                        |                  |              |            |                          |         |            |               |                         |                       |                        |                   |                  |              |                    |                     |                       |            |              |           |            |               |                        |              |                         |           |                |               |           |         |          |  |  |  | Drinking fountain and bathrooms in Civic Center                            |  |  |                                |  |
| Ore (future Rec. Center)  | 4.47          | 2.40         |             |                    |                |                |                        |                  |              |            |                          |         | x          |               |                         |                       |                        |                   | x                |              |                    |                     |                       |            |              |           |            |               |                        |              |                         |           |                |               |           |         |          |  |  |  | Location where the Fruita Community Recreation Center will be constructed. |  |  |                                |  |
| <b>Total Acreage Special Purpose Parks</b>                                | <b>6.34</b>   | <b>0.00</b>  |             |                    |                |                |                        |                  |              |            |                          |         |            |               |                         |                       |                        |                   |                  |              |                    |                     |                       |            |              |           |            |               |                        |              |                         |           |                |               |           |         |          |  |  |  |  |  |  |                                |  |
| <b>Total Acreage - All Parks</b>  | <b>47.94</b>  | <b>4.27</b>  |             |                    |                |                |                        |                  |              |            |                          |         |            |               |                         |                       |                        |                   |                  |              |                    |                     |                       |            |              |           |            |               |                        |              |                         |           |                |               |           |         |          |  |  |  |  |  |  |                                |  |
| <b>OPEN SPACE</b>   |               |              |             |                    |                |                |                        |                  |              |            |                          |         |            |               |                         |                       |                        |                   |                  |              |                    |                     |                       |            |              |           |            |               |                        |              |                         |           |                |               |           |         |          |  |  |  |  |  |  |                                |  |
| <b>NATURAL AREAS/CORRIDORS</b>  |               |              |             |                    |                |                |                        |                  |              |            |                          |         |            |               |                         |                       |                        |                   |                  |              |                    |                     |                       |            |              |           |            |               |                        |              |                         |           |                |               |           |         |          |  |  |  |  |  |  |                                |  |
| Snooks Bottom Open Space  | 112.89        |              | 0.46        |                    |                |                |                        |                  |              | x          |                          |         |            |               |                         |                       |                        |                   |                  |              |                    | x                   | x                     |            |              |           |            |               |                        |              |                         |           |                |               |           |         |          |  |  | x  |  |  |  |                                |  |
| Mountain Lakes  | 173.30        |              |             |                    |                |                |                        |                  |              |            |                          |         |            |               |                         |                       |                        |                   |                  |              |                    | x                   | x                     |            |              |           |            |               |                        |              |                         |           |                |               |           |         |          |  |  |  | x  | Mountain Lakes are about one hour away - drive-time. Mountain biking and some camping available. |  |                                |  |
| Little Salt Wash Greenway   | 11.48         |              |             |                    |                |                |                        |                  |              |            |                          |         |            |               |                         |                       |                        |                   |                  |              |                    |                     |                       |            |              |           |            |               |                        |              |                         |           |                |               |           |         |          |  |  |  |  |  |  |                                |  |
| Big Salt Wash Greenway  | 19.73         |              |             |                    |                |                |                        |                  |              |            |                          |         |            |               |                         |                       |                        |                   |                  |              |                    |                     |                       |            |              |           |            |               |                        |              |                         |           |                |               |           |         |          |  |  |  |  |  |  |                                |  |
| Kingsview   | 47.76         | 26.00        |             |                    |                |                |                        |                  |              |            |                          |         |            |               |                         |                       |                        |                   |                  |              |                    | x                   |                       |            |              |           |            |               |                        |              |                         |           |                |               |           |         |          |  |  |  |  |  |  |                                |  |
| <b>Total Natural Areas/Corridors Acreage</b>                              | <b>365.16</b> | <b>0.00</b>  |             |                    |                |                |                        |                  |              |            |                          |         |            |               |                         |                       |                        |                   |                  |              |                    |                     |                       |            |              |           |            |               |                        |              |                         |           |                |               |           |         |          |  |  |  |  |  |  |                                |  |
| <b>REGIONAL OPEN SPACE</b>  |               |              |             |                    |                |                |                        |                  |              |            |                          |         |            |               |                         |                       |                        |                   |                  |              |                    |                     |                       |            |              |           |            |               |                        |              |                         |           |                |               |           |         |          |  |  |  |  |  |  |                                |  |
| <b>Total Regional Open Space Acreage</b>                                  | <b>0.00</b>   | <b>0.00</b>  |             |                    |                |                |                        |                  |              |            |                          |         |            |               |                         |                       |                        |                   |                  |              |                    |                     |                       |            |              |           |            |               |                        |              |                         |           |                |               |           |         |          |  |  |  |  |  |  |                                |  |
| <b>OTHER OPEN SPACE AREAS - NON CITY OWNED</b>                            |               |              |             |                    |                |                |                        |                  |              |            |                          |         |            |               |                         |                       |                        |                   |                  |              |                    |                     |                       |            |              |           |            |               |                        |              |                         |           |                |               |           |         |          |  |  |  |  |  |  |                                |  |
| <b>Total Acreage - Other Open Space Areas - Non-City Owned</b>            |               | <b>N/A</b>   |             |                    |                |                |                        |                  |              |            |                          |         |            |               |                         |                       |                        |                   |                  |              |                    |                     |                       |            |              |           |            |               |                        |              |                         |           |                |               |           |         |          |  |  |  |  |  |  |                                |  |
| <b>Total Acreage - All Open Space</b>                                     | <b>365.16</b> | <b>N/A</b>   |             |                    |                |                |                        |                  |              |            |                          |         |            |               |                         |                       |                        |                   |                  |              |                    |                     |                       |            |              |           |            |               |                        |              |                         |           |                |               |           |         |          |  |  |  |  |  |  |                                |  |
| <b>RECREATION CENTERS, GOLF COURSES, AND OTHER RESOURCES</b>              |               |              |             |                    |                |                |                        |                  |              |            |                          |         |            |               |                         |                       |                        |                   |                  |              |                    |                     |                       |            |              |           |            |               |                        |              |                         |           |                |               |           |         |          |  |  |  |  |  |  |                                |  |
| CDOT Visitor Center (Helicopter Minor)                                    | 5.24          | 5.24         |             |                    |                | x              |                        |                  |              | x          |                          |         |            |               |                         |                       |                        |                   |                  |              |                    |                     | x                     | x          | x            |           |            |               |                        |              |                         |           |                |               |           |         |          |  |  |  |  | x  |  |                                |  |
| Dinosaur Museum   | 3.49          | 1.00         |             | x                  |                |                |                        |                  |              |            |                          |         |            |               |                         |                       |                        |                   |                  |              |                    |                     |                       |            |              |           |            |               |                        |              |                         |           |                |               |           |         |          |  |  |  |  |  |  |                                |  |
| Adobe Creek National Golf Course  | 217.69        |              |             |                    |                |                |                        |                  |              |            |                          |         |            |               |                         |                       |                        |                   |                  |              |                    |                     |                       |            |              |           |            |               |                        |              |                         |           |                |               |           |         |          |  |  |  |  |  |  | Private but open to the public |  |
| <b>Total Recreation Centers, Golf Courses and other Resources Acreage</b> | <b>226.42</b> | <b>1.00</b>  |             |                    |                |                |                        |                  |              |            |                          |         |            |               |                         |                       |                        |                   |                  |              |                    |                     |                       |            |              |           |            |               |                        |              |                         |           |                |               |           |         |          |  |  |  |  |  |  |                                |  |

Appendix A: City of Fruita POST Master Plan  
December 2009

Drinking Fountains  
 Baseball Field  
 Softball Field  
 Multi-Use Field - Turf  
 Basketball Court  
 Tennis Court  
 Volleyball  
 Walking Path/Paved Trail  
 Tot Lot  
 Playground  
 Picnic Tables  
 Pavilion/Picnic Shelter  
 Multi-use Paved Court  
 Museum/Historical Site  
 Recreation Center  
 Community Center  
 Outdoor Pool  
 Water-play Feature  
 Natural Environment  
 Rest Rooms/San-o-lets  
 Concession  
 Bike Parking  
 Barbecues  
 Horseshoes  
 Climbing Wall  
 Off-street Parking Lot  
 Amphitheater  
 Dog Park/Off-Leash Area  
 Skatepark  
 In-Line Hockey  
 Art/Sculpture  
 Disc Golf  
 Fishing

| Name  | Total Ac.    | Devel. Ac. | Trail Miles | Drinking Fountains | Baseball Field | Softball Field | Multi-Use Field - Turf | Basketball Court | Tennis Court | Volleyball | Walking Path/Paved Trail | Tot Lot | Playground | Picnic Tables | Pavilion/Picnic Shelter | Multi-use Paved Court | Museum/Historical Site | Recreation Center | Community Center | Outdoor Pool | Water-play Feature | Natural Environment | Rest Rooms/San-o-lets | Concession | Bike Parking | Barbecues | Horseshoes | Climbing Wall | Off-street Parking Lot | Amphitheater | Dog Park/Off-Leash Area | Skatepark | In-Line Hockey | Art/Sculpture | Disc Golf | Fishing | Comments |  |   |
|---|--------------|------------|-------------|--------------------|----------------|----------------|------------------------|------------------|--------------|------------|--------------------------|---------|------------|---------------|-------------------------|-----------------------|------------------------|-------------------|------------------|--------------|--------------------|---------------------|-----------------------|------------|--------------|-----------|------------|---------------|------------------------|--------------|-------------------------|-----------|----------------|---------------|-----------|---------|----------|--|---|
| <b>PRIMARY OFF-STREET TRAILS AND TRAILHEADS</b>   |              |            |             |                    |                |                |                        |                  |              |            |                          |         |            |               |                         |                       |                        |                   |                  |              |                    |                     |                       |            |              |           |            |               |                        |              |                         |           |                |               |           |         |          |  |   |
| Big Salt Wash Trail   |              |            | 0.83        |                    |                |                |                        |                  |              | x          |                          |         |            |               |                         |                       |                        |                   |                  |              |                    |                     |                       |            |              |           |            |               |                        |              |                         |           |                |               |           |         |          |  |   |
| US 6/50   |              |            | 2.20        |                    |                |                |                        |                  |              |            |                          |         |            |               |                         |                       |                        |                   |                  |              |                    |                     |                       |            |              |           |            |               |                        |              |                         |           |                |               |           |         |          |  |   |
| SH 340  |              |            | 0.55        |                    |                |                |                        |                  |              |            |                          |         |            |               |                         |                       |                        |                   |                  |              |                    |                     |                       |            |              |           |            |               |                        |              |                         |           |                |               |           |         |          |  |   |
| Snooks Bottom   |              |            | 0.30        |                    |                |                |                        |                  |              | x          |                          |         |            |               |                         |                       |                        |                   |                  |              |                    |                     |                       |            |              |           |            |               |                        |              |                         |           |                |               |           |         |          |  |   |
| Little Salt Wash Park   |              |            | 1.36        |                    |                |                |                        |                  |              | x          |                          |         |            |               |                         |                       |                        |                   |                  |              |                    |                     |                       |            |              |           |            |               |                        |              |                         |           |                |               |           |         |          |  |   |
| Sycamore  |              |            | 0.12        |                    |                |                |                        |                  |              | x          |                          |         |            |               |                         |                       |                        |                   |                  |              |                    |                     |                       |            |              |           |            |               |                        |              |                         |           |                |               |           |         |          |  |   |
| Little Salt Wash Trail  |              |            | 0.85        |                    |                |                |                        |                  |              | x          |                          |         |            |               |                         |                       |                        |                   |                  |              |                    |                     |                       |            |              |           |            |               |                        |              |                         |           |                |               |           |         |          |  |   |
| Carolina Ave.   |              |            | 0.44        |                    |                |                |                        |                  |              | x          |                          |         |            |               |                         |                       |                        |                   |                  |              |                    |                     |                       |            |              |           |            |               |                        |              |                         |           |                |               |           |         |          | Trail is part of the Little Salt Wash Park |   |
| <b>Total Trails and Trailhead Acreage</b>   | <b>N/A</b>   | <b>N/A</b> | <b>6.65</b> |                    |                |                |                        |                  |              |            |                          |         |            |               |                         |                       |                        |                   |                  |              |                    |                     |                       |            |              |           |            |               |                        |              |                         |           |                |               |           |         |          |  |   |
| <b>UNDEVELOPED PARKLAND</b>   |              |            |             |                    |                |                |                        |                  |              |            |                          |         |            |               |                         |                       |                        |                   |                  |              |                    |                     |                       |            |              |           |            |               |                        |              |                         |           |                |               |           |         |          |  |   |
| Red Cliffs - Proposed   | 2.40         | 0.00       |             |                    |                |                |                        |                  |              |            |                          |         |            |               |                         |                       |                        |                   |                  |              |                    |                     |                       |            |              |           |            |               |                        |              |                         |           |                |               |           |         |          |  |   |
| 16 and L Roads - Proposed   | 27.00        | 0.00       |             |                    |                |                |                        |                  |              |            |                          |         |            |               |                         |                       |                        |                   |                  |              |                    |                     |                       |            |              |           |            |               |                        |              |                         |           |                |               |           |         |          |  | 40 acre parcel recently purchased. 13 acres are for a future elementary school and 27 acres are set aside for parkland and other city uses.   |
| Recreation Center   | N/A          |            |             |                    |                |                |                        |                  |              |            |                          |         |            |               |                         |                       |                        |                   |                  |              |                    |                     |                       |            |              |           |            |               |                        |              |                         |           |                |               |           |         |          |  | To be developed at site of Ore Park   |
| Wastewater Treatment Site   | 55.00        |            |             |                    |                |                |                        |                  |              |            |                          |         |            |               |                         |                       |                        |                   |                  |              |                    |                     |                       |            |              |           |            |               |                        |              |                         |           |                |               |           |         |          |  |   |
| <b>Total Undeveloped Parkland Acreage</b>   | <b>84.40</b> | <b>0</b>   |             |                    |                |                |                        |                  |              |            |                          |         |            |               |                         |                       |                        |                   |                  |              |                    |                     |                       |            |              |           |            |               |                        |              |                         |           |                |               |           |         |          |  |   |
| <b>SCHOOL DISTRICT RESOURCES</b>  |              |            |             |                    |                |                |                        |                  |              |            |                          |         |            |               |                         |                       |                        |                   |                  |              |                    |                     |                       |            |              |           |            |               |                        |              |                         |           |                |               |           |         |          |  |   |
| Sports Complex at 8/9 and High School   |              |            |             | x                  | x              |                | x                      | x                | x            | x          |                          |         |            |               |                         |                       |                        |                   |                  |              |                    |                     |                       |            |              |           |            |               |                        |              |                         |           |                |               |           |         |          |  | Use of fields are limited to Sunday use. City of Fruita also works with the School District for gymnasium use but again use is limited based on their schedule of events. High School does have an indoor climbing wall and 5 lane lap pool.. |
| <b>Total School District Acreage</b>  | <b>0.00</b>  | <b>0</b>   |             |                    |                |                |                        |                  |              |            |                          |         |            |               |                         |                       |                        |                   |                  |              |                    |                     |                       |            |              |           |            |               |                        |              |                         |           |                |               |           |         |          |  |   |
| <b>OTHER PUBLIC PARK &amp; RECREATION RESOURCES (regional parks, fed/state resources, etc.)</b> |              |            |             |                    |                |                |                        |                  |              |            |                          |         |            |               |                         |                       |                        |                   |                  |              |                    |                     |                       |            |              |           |            |               |                        |              |                         |           |                |               |           |         |          |  |   |
| James M Robb Colorado River State Park  | 80.14        | 40.00      | 0.25        | x                  |                |                |                        |                  |              | x          |                          | x       | x          | x             |                         |                       |                        |                   |                  |              |                    | x                   | x                     |            | x            | x         |            |               |                        |              |                         |           |                |               |           |         |          | x  | Part of Colorado State Parks System. Park is within the City of Fruita limits and the Riverfront Trail will run through this park. Park includes beach area for swimming, and 60 RV sites and 13 tent camping sites.                          |
| Colorado National Monument  | N/A          |            |             |                    |                |                |                        |                  |              | x          |                          |         |            |               |                         |                       |                        |                   |                  |              |                    |                     | x                     | x          | x            | x         | x          |               |                        |              |                         |           |                |               |           |         |          |  | Unit of National Park System popular for tourists and locals alike; contains numerous trails, visitor center, campgrounds, and day use areas  |
| McInnis Canyons, NCA  | N/A          |            |             |                    |                |                |                        |                  |              |            |                          |         |            |               |                         |                       |                        |                   |                  |              |                    |                     | x                     |            |              |           |            |               |                        | x            | x                       |           |                |               |           |         |          |  | Thousands of acres of BLM maintained lands. Shares boundary with the City of Fruita. Horseback riding, hiking, etc.   |
| North Fruita Desert   | N/A          |            |             |                    |                |                |                        |                  |              |            |                          |         |            |               |                         |                       |                        |                   |                  |              |                    |                     | x                     |            |              |           |            |               |                        |              |                         |           |                |               |           |         |          |  | BLM maintained lands - mountain biking, hiking and camping areas.   |
| <b>Total Other Public Park and Recreation Resources</b>   | <b>80.14</b> |            |             |                    |                |                |                        |                  |              |            |                          |         |            |               |                         |                       |                        |                   |                  |              |                    |                     |                       |            |              |           |            |               |                        |              |                         |           |                |               |           |         |          |  |   |
| <b>PRIVATE RECREATION RESOURCES(Little League/ soccer club complexes, etc.)</b>                 |              |            |             |                    |                |                |                        |                  |              |            |                          |         |            |               |                         |                       |                        |                   |                  |              |                    |                     |                       |            |              |           |            |               |                        |              |                         |           |                |               |           |         |          |  |   |
| <b>Total Private Recreation Resources Acreage</b>   | <b>0.00</b>  |            |             |                    |                |                |                        |                  |              |            |                          |         |            |               |                         |                       |                        |                   |                  |              |                    |                     |                       |            |              |           |            |               |                        |              |                         |           |                |               |           |         |          |  |   |

\* = lighted facility "1" = acres/number/miles "X" = available "P" =proposed "U/C" = under construction